



# TxDOT Surveyor's Toolkit

## 2022 PEPS Conference

Ronny Lackey

November 30, 2022



1

- Past Standards

2

- Current Standards

3

- WA Development

4

- Scope and Standards Checklist

5

- Errors and Omissions

6

- Future Standards

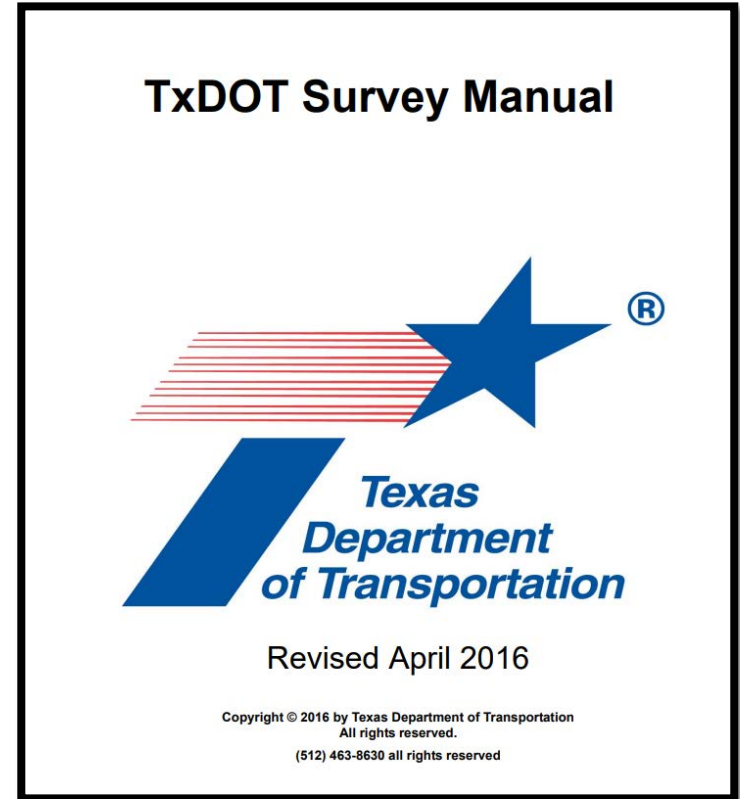
7

- Going Beyond the Page



## Manual & Contracts & District Standards

- Conflicting Standards
- Out-of-Date Standards
- No regular review





- Surveyors' Toolkit
  - Contains job aids including:
    - Checklists
    - Manuals
    - Standard Operating Procedures
    - GIS Links
- District Standards
  - Builds on Surveyors' Toolkit

[Home](#) / [Business](#) / [Project development resources](#)

## Surveyors' toolkit

This page provides a collection of procedures, specifications, and resources for carrying out survey activities on transportation projects. These tools assist with assuring compliance with methods and requirements for completion of TxDOT projects.

- [TxDOT Survey Manual](#)
- [Chapter 4 of the ROW Preliminary Procedures for the Authority to Proceed Manual](#)
- [TxDOT PEPS for engineering, architectural, and surveying consultants](#)
- [TxDOT Unmanned Aircraft System Services](#)

### Field

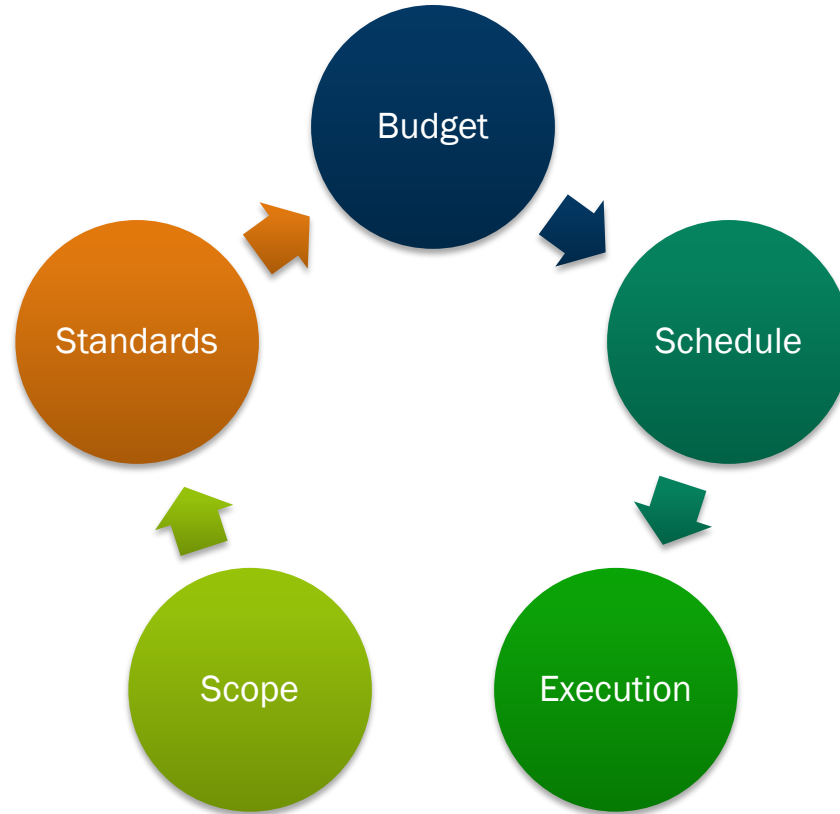
- [Control layout template](#)
- [Local-let acquisition survey checklist](#) (Form ROW-S-LLAcqCheck)
- [Local-let survey control checklist](#) (Form ROW-S-LLCntrlCheck)
- [Monument specifications](#)
- [Photogrammetry guide](#)
- [Required feature table](#)
- [Survey linking codes for OpenRoads designer](#)
- [Survey safety inspection](#) (Form ROW-S-SI)
- [Typical control diagram](#)

### Office

- [Aerial panel layout template](#)
- [County surface adjustment factors](#)
- [Design survey checklist](#) (Form ROW-S-DesCheck)
- [Geo-Database Template for Use in TxDOTCONNECT Only](#) (ROW-Parcel-Edits-v2)
- [Photogrammetry feature collection standards](#)
- [Primary survey control](#) (Form 2462)
- [Property description checklist](#) (Form ROW S-PDCheck)
- [Real property asset map](#)
- [Submission standards for ROW mapping data in ArcGIS format](#)

### Project management

- [Preliminary site visit](#) (Form ROW-S-PrelimSite)
- [Texas 811](#) [🔗](#)
- [Texas Railroad Commission public GIS viewer](#) [🔗](#)
- [Texas Public Utility Commission water and sewer CCN viewer](#) [🔗](#)
- [TxDOT district survey coordinators](#)
- [TxDOT survey request](#) (Form ROW-S-SurveyRequest)



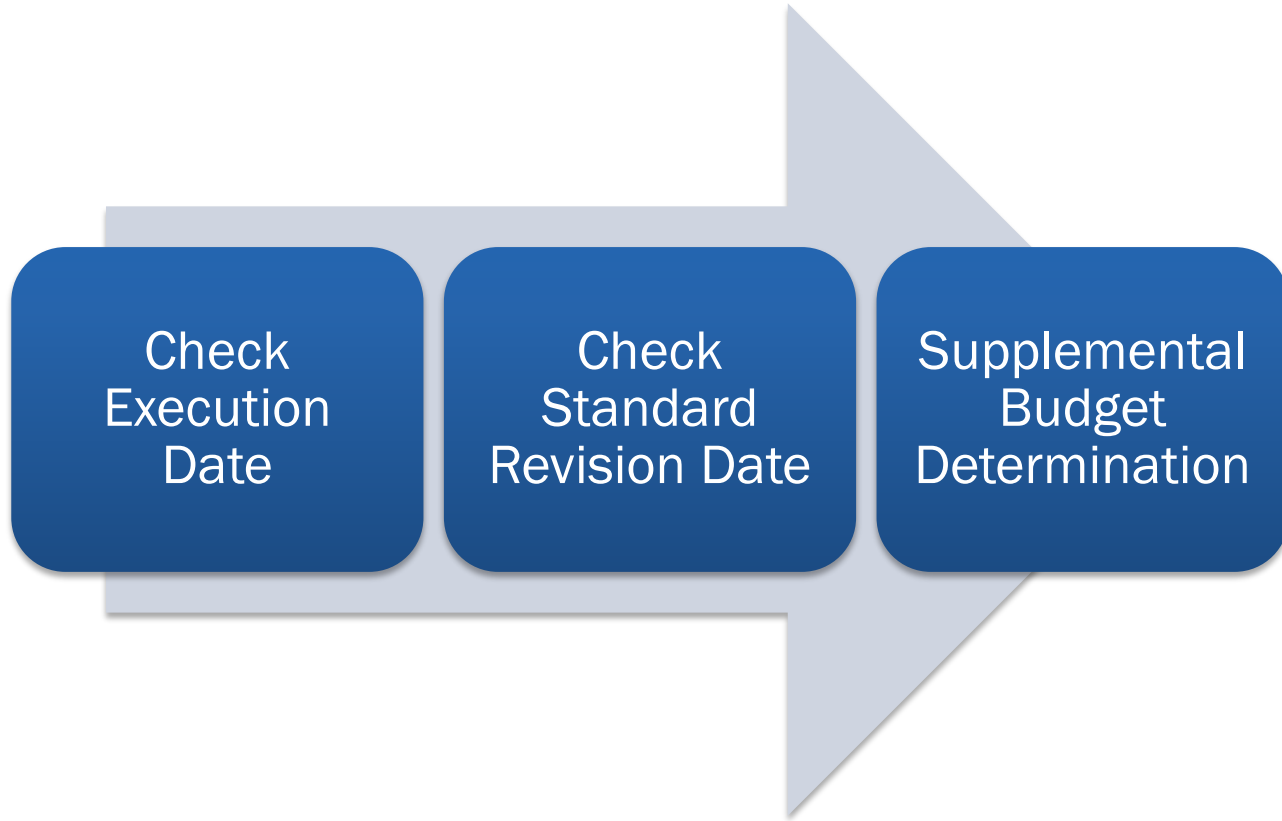


Have you checked the Toolkit?

Have you reviewed the project area?

Have you sent a standards request to the District Survey Coordinator?

Is everything in writing with a clear author and time/date stamp?





## Standards

- Were the standards followed?
- What date were the standards updated?

## Work Authorization Executed

- Was the scope met?
- When was the work authorization executed?

## District Instructions

- Were there any District instructions outside of the contract?
- Were they written?

## Supplemental Work Authorization

- Standards at date of original work authorization execution were followed, along with any written District instructions before execution.





## Contracts reference Toolkit

- Shorter contract documents
- Toolkit enforcement
- Exceptions allowed for project reasons

## Toolkit

- Reviewed annually by COGS

### RIGHT-OF-WAY (ROW) DATA, UTILITY ENGINEERING INVESTIGATION, AND UTILITY COORDINATION

#### 3.1. Right of Way Mapping Requirements.

Standards and deliverables are detailed in the *TxDOT Survey Manual* and the TxDOT Surveyors' Toolkit. The version in existence at the time the work authorization or supplemental work authorization is signed shall be referenced and adhered to at all times, unless a written exception is provided by the ROW Division Survey Section Director. The Surveyor shall provide the services of a Licensed State Land Surveyor to locate the boundary of any lands controlled by the Texas General Land Office. The Surveyor remains ultimately responsible and shall ensure that the work is performed as required.



## Engineering, architectural, and surveying consultants



### Working with PEPS

[Qualifications-based selection »](#)



### Become precertified

[Eligibility & application preparation and submittal »](#)



### Become administratively qualified

[Non-federal & federal process and submittal process »](#)



# Going Beyond the Page



Texas Department of Transportation

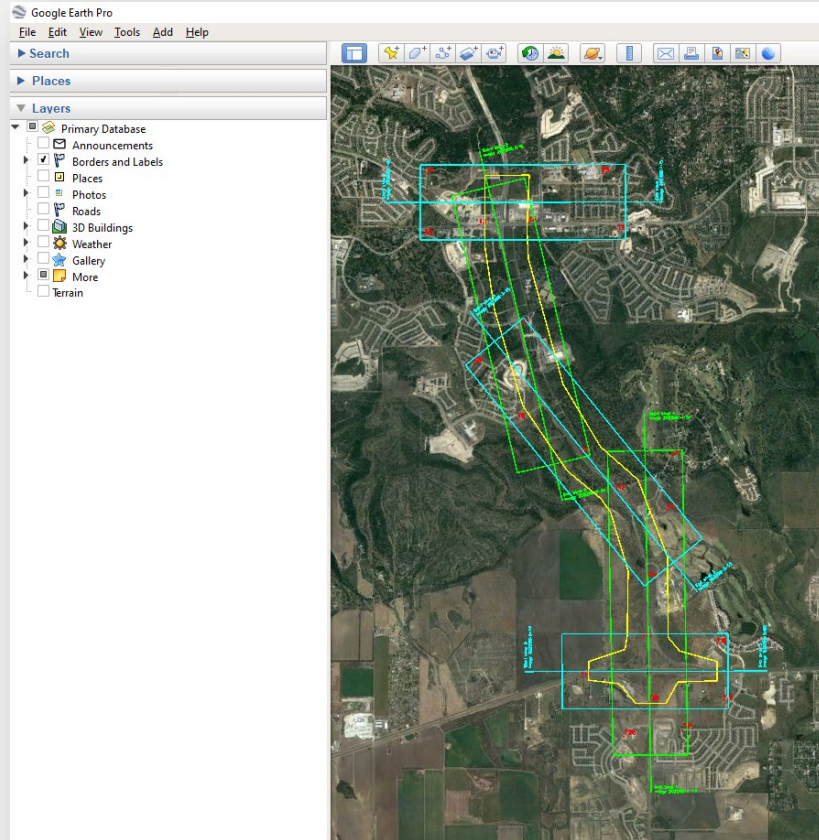
## Real Property Asset Map

Details Legend Search Data Tools Layers Basemap Bookmarks Email Print Find address or

Level: 7 | -106.1436, 30.1723

World Transportation  
World Transportation





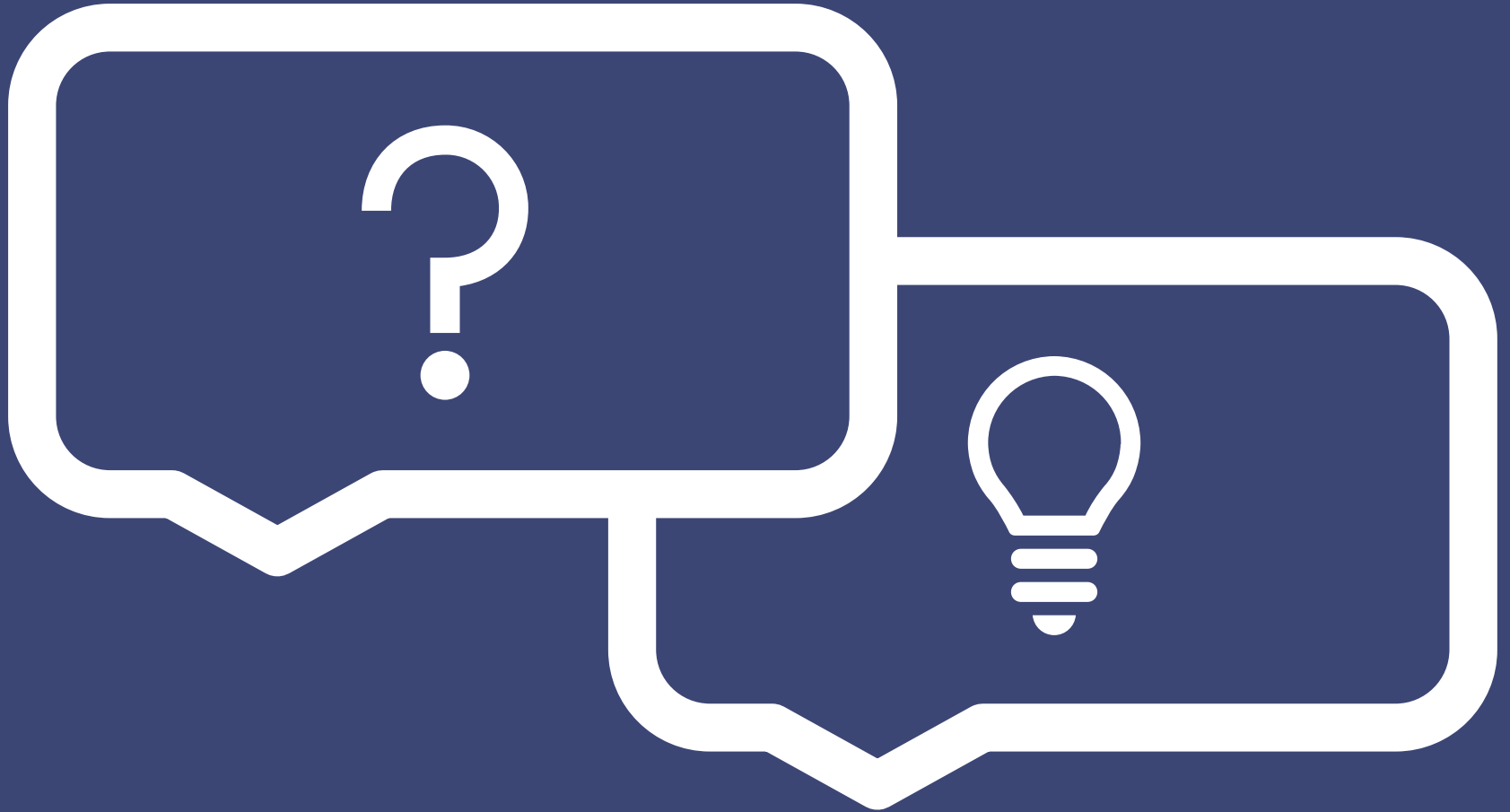


- YouTube Lessons
- Open Roads Designer Templates
- Data Dictionaries
- Samples

☰ YouTube

txdot row







# Ronny Lackey

TxDOT Surveying Section Director

713-594-1711

[Ronny.Lackey@txdot.gov](mailto:Ronny.Lackey@txdot.gov)