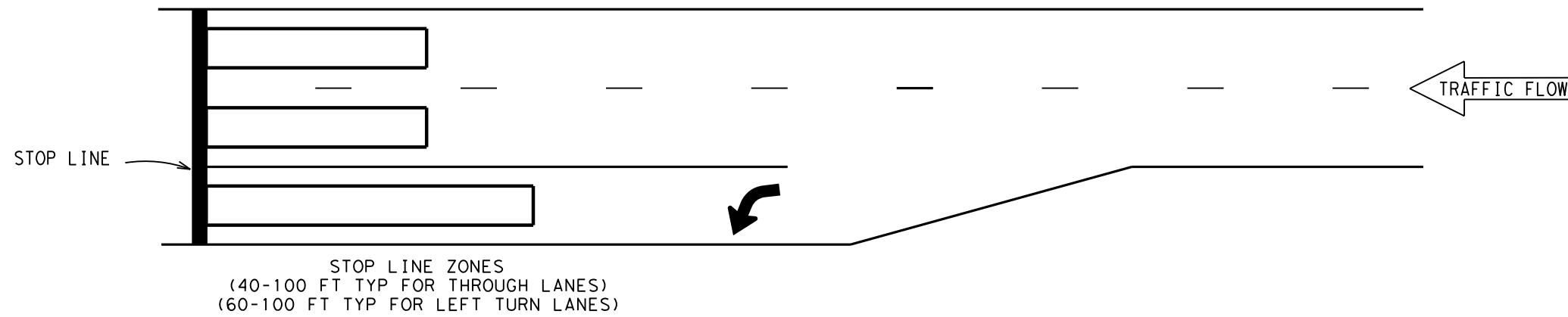
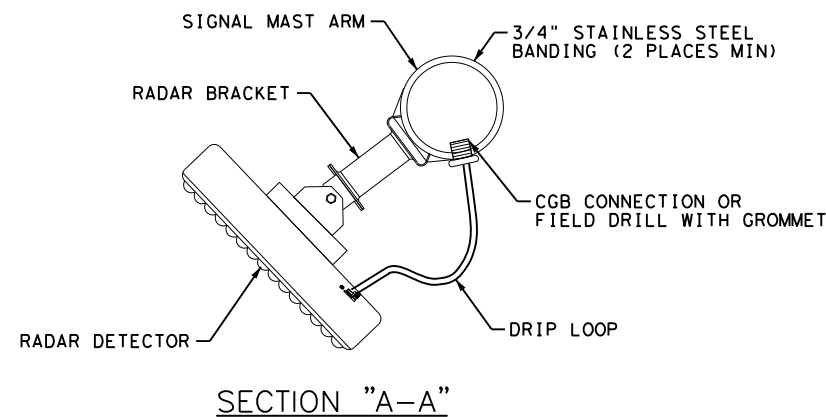
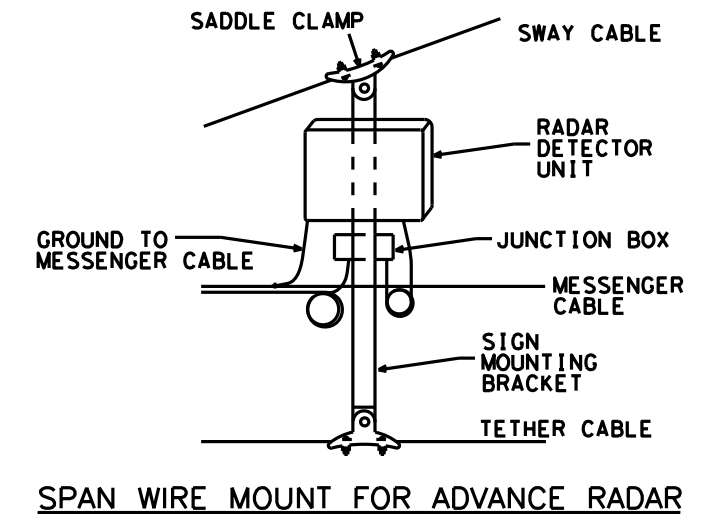
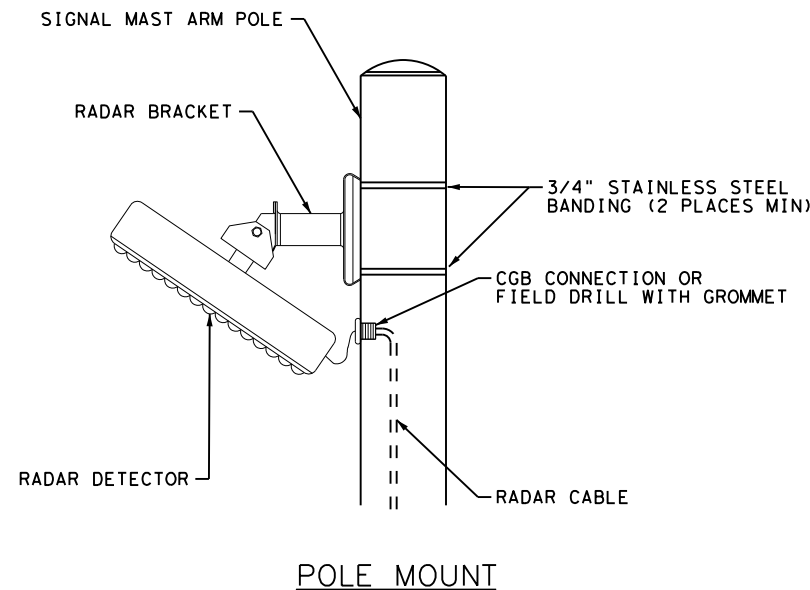
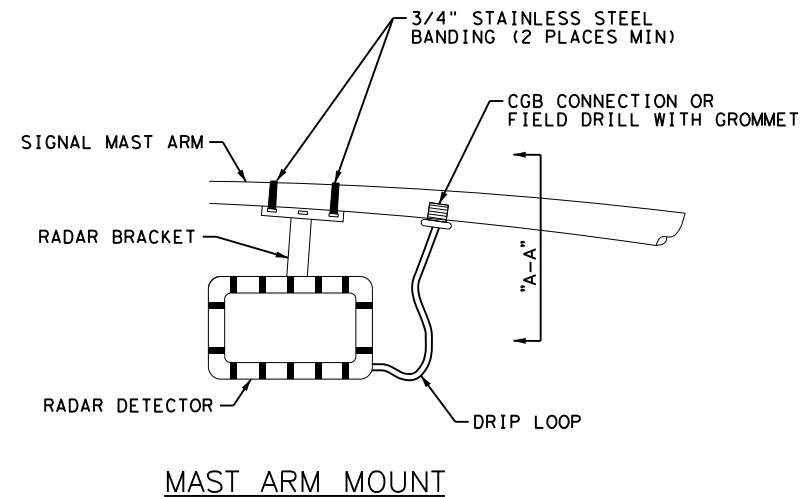


RADAR DETECTION ZONE LOCATIONS



APPROACH SPEED LIMIT (MPH)	MINIMUM RANGE OF ADVANCE DETECTION (LF)
40	355
45	400
50	440
55	490
60	530
65	575
70	620

RADAR DETECTION INSTALLATION DETAILS



NOTES:

1. THE RADAR SENSOR MOUNTING BRACKET MUST BE ADJUSTABLE TO TILT UP, DOWN, LEFT, RIGHT, AND TO ROTATE.
2. THE RADAR DETECTOR UNITS SHOWN ARE NOT INTENDED TO REPRESENT ANY SPECIFIC BRAND OR PRODUCT, AND ALTERNATE MOUNTING METHODS MAY BE SUBMITTED FOR APPROVAL.

DALLAS DISTRICT STANDARD



RADAR VEHICLE DETECTION SYSTEM RVDS-23 (DAL)

REVISIONS	FED. RD. DIV. NO.	FEDERAL AID PROJECT NO.	HIGHWAY NO.
	6	(SEE TITLE SHEET)	
	STATE	DISTRICT	COUNTY
	TEXAS	18	DALLAS
	CONTROL	SECTION	JOB
	---	---	---