



Precertification Changes

2023 PEPS Conference

LaTasha Brookins, P.E., TxDOT-PFD

Khalid Jamil, P.E., TxDOT-DES

& Stacy James, P.E., TxDOT-PEPS

December 5, 2023



1

- Precertification Highlights

2

- Changes to Categories 3.7.1 & 4.7.1

3

- Changes to Categories 24.10.1 & 24.10.2

4

- Wrap-up and Resources

5

- Questions

Precertification Highlights

Stacy James, P.E.



Precertification rule and website:

- [43 TAC §9.33](#)
- <https://www.txdot.gov/business/peps/become-precertified.html>



Program History:

- Created in 1997
- Major category updates in 2018 & 2022



How it works:

- TxDOT defines work categories
- Individuals apply for precertification
- Firms are precertified by extension



- Number and title
- Description of work in the category
- Minimum qualification requirements

What's in a work category?



- Type of degree
- License
- Certification
- Type of experience
- Years of experience
- Training

What are the qualifications?



Changes to Categories

3.7.1 & 4.7.1

Khalid Jamil, P.E.

Changes to Categories 3.7.1 & 4.7.1



Category 3.7.1 – Traffic Operational Analysis

Category 4.7.1 – Traffic Safety Analysis



Why?

- Required by FHWA
- Improve analyses included in IAJs



What?

- Add new training requirements
- Require Texas P.E.



When?

- Changed in Jan. 2023
- Updated further in September 2023
- Must comply by December 31, 2023

Category 3.7.1 Training Requirements



New requirements – added Jan. 2023

- Highway Capacity Analysis (HCM/HCS) – McTrans
- Synchro Studio 11 or latest Int./Adv. Training – Cubic Trafficware
- PTV VISSIM Advanced Training for Reviewers – PTV



Updated requirements – rev. Sept. 2023

- Synchro training may be provided by Cubic Trafficware or another approved trainer
- VISSIM training may be an equivalent course and the training may be provided by PTV or another approved trainer

Category 4.7.1 Training Requirements



New requirements – added Jan. 2023

- Highway Safety Analysis Training – McTrans
- NHI 380100 “Using Interactive Highway Safety Design Model (IHDSM)” – National Highway Institute (NHI)



Updated requirements – rev. Sept. 2023

- NHI training may be replaced by another approved training course

What do I need to do to get precertified or stay precertified?

- Complete the training requirements and submit documentation
- Get a P.E. license in Texas and add it to CCIS

How do I get approval for equivalent course or another trainer?

- Provide course curriculum and trainer info to TxDOT
- Ask TxDOT for approval

What if I have questions?

- Refer to the [work category list](#)
- Refer to the [FAQ for work categories 3.7.1 & 4.7.1](#)
- Refer to the [Training Certificate Submittal Requirements](#)

Changes to Categories

24.10.1 & 24.10.2

LaTasha Brookins, P.E.



Category 24.10.1 – Toll Operations Planning Analysis
Category 24.10.2 – Toll Operations Data Analysis



Why?

- Clarify intent & requirements
- Consolidate into one category



What?

- Revise 24.10.1
- Retire 24.10.2



When?

- Implement change in February 2024

Existing 24.10.1:

- Toll Operations Planning Analysis
- Described as analysis of toll traffic data and performing traffic trend analysis on the facility's performance and operation for planning purposes and to identify improvement opportunities
- Requires one planner with five years of experience analyzing historical toll traffic data and performing toll traffic trend analysis.

Existing 24.10.2:

- Toll Operations Data Analysis
- Described as analyzing performance and operation data for toll roads and managed lanes and to identify improvement opportunities.
- Requires one toll specialist with five years of experience in developing and optimizing toll road and managed lane projects.

Note: All of the individuals who are precertified in 24.10.2 are also precertified in 24.10.1.

Proposed 24.10.1:

- Toll Facility Traffic Operational Analysis
- Description: This category includes analyzing historical toll traffic data and performing traffic trend analyses on existing toll facilities' performance and roadway operations. Associated activities include identifying roadway performance and operational improvement opportunities for toll roads or managed lanes.
- Requirements: The firm must employ one planner, with a minimum of five years of demonstrated experience directly related to the analysis of historical toll traffic data, roadway performance, and toll traffic trends for toll roads or managed lanes.

What will happen to people who are precertified in 24.10.1?

- Individuals will remain precertified.
- No additional actions are necessary for these individuals.

What will happen to people who are precertified in 24.10.2?

- This category will be marked as retired.
- All precertification records for this category will be archived.

What if I have questions?

- For questions about the revised requirements, contact Marcy Saenz (Marcy.Saenz@txdot.gov) at PFD.

Wrap-up and Resources

Stacy James, P.E.

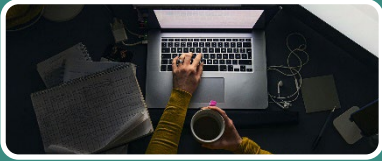


Precertification is required for task leaders of standard categories

Firms must renew annually to maintain active status

Visit the Become Precertified webpage for the latest version of the work categories

Watch for emails about these and other precertification changes



Precertification webpage:

- <https://www.txdot.gov/business/peps/become-precertified.html>



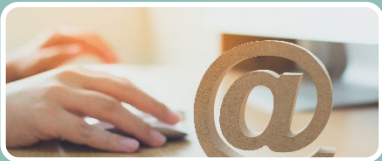
Precertification FAQ documents:

- <https://www.txdot.gov/business/peps/become-precertified/precertification-faqs.html>
- <https://ftp.txdot.gov/pub/txdot/ppd/faq-work-cat-3-7-1-4-7-1.pdf>



For general questions about precertification, contact:

- PEPS_COE_Process@txdot.gov



For CCIS & precertification application status questions, contact:

- PEPS_CCIS_Precert@txdot.gov

Questions and Discussion





HELP #EndTheStreakTX

End the streak of daily deaths on Texas roadways.

[TxDOT.gov](https://www.txdot.gov) (Keyword: #EndTheStreakTX)



#EndTheStreakTX Toolkit





Khalid Jamil, P.E.

TxDOT-Design Division



Khalid.Jamil@txdot.gov



(512) 486-5171

LaTasha Brookins, P.E.

TxDOT-PFD Division



LaTasha.Brookins@txdot.gov



(512) 874-9141

Stacy James, P.E.

TxDOT-PEPS Division



Stacy.James@txdot.gov



(512) 416-2064